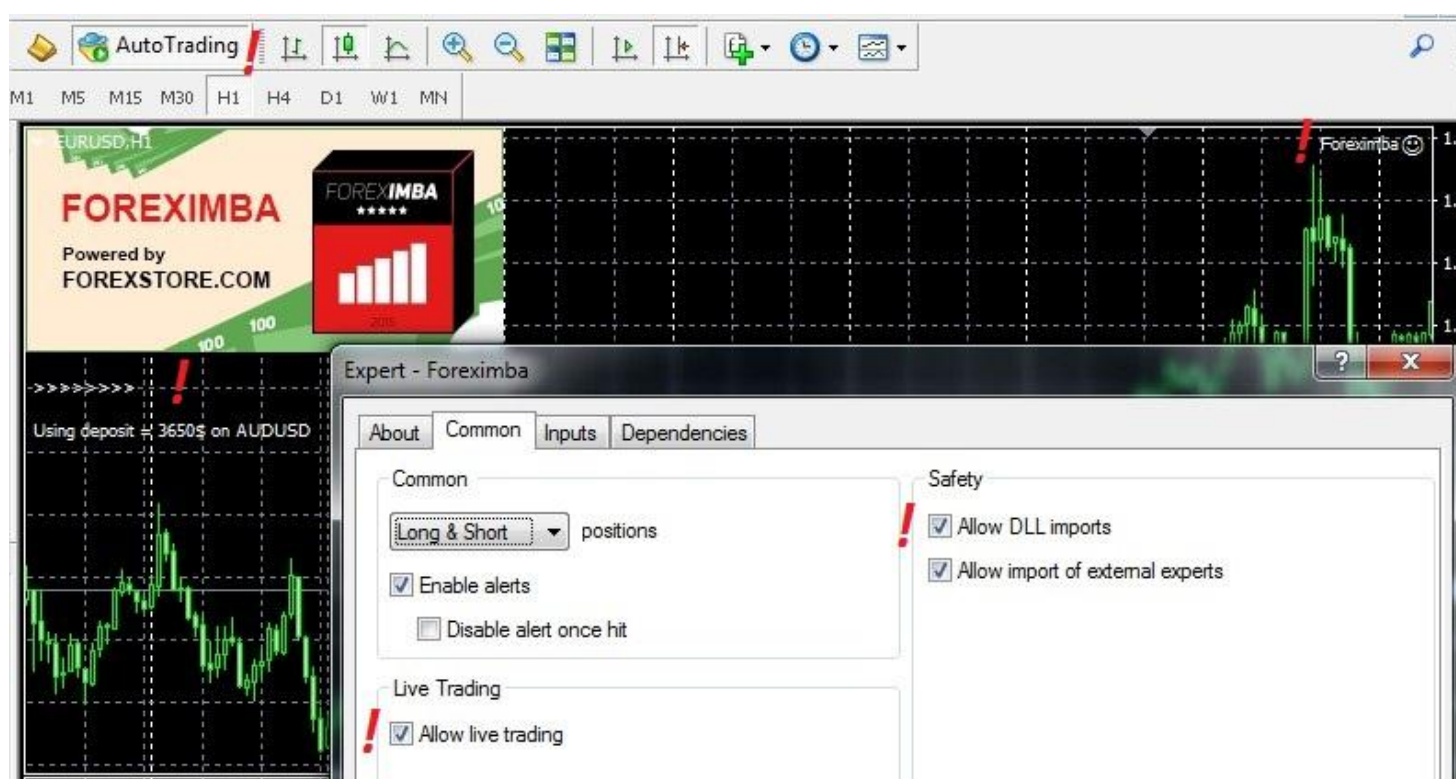


FOREXIMBA

FOLLOW THE NEXT STEPS TO INSTALL AND SET FOREXIMBA

1. Open MQL4 folder of your MetaTrader4 (File – Open Data Folder – MQL4).
2. Copy Foreximba.ex4 file from the archive to a folder Experts, and ForexStore.dll file to a folder Libraries.
3. Reboot MetaTrader4.
4. Move FOREXIMBA from Navigator to a AUDUSD chart with any timeframe.
5. Allow DLL imports and live trading in Common options.
6. Leave Inputs parameters as default or set the desired parameters.
7. Turn ON AutoTrading button, if needed.
8. Check if you set everything properly:



PARAMETERS OF FOREXIMBA

AutoRisk

Turning ON/OFF automatic calculation of lot sizes based on the next Risk parameter

Risk

Allows to set a part of your deposit in percentage, which the EA will use in trading

Lot

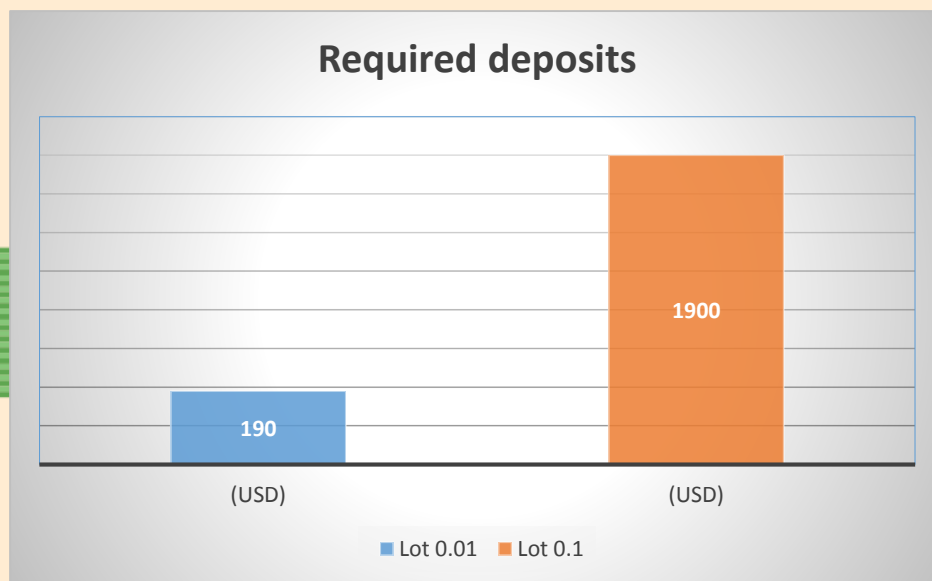
If AutoRisk is turned OFF, the EA will set the first lot which you specify in this option

Slippage

Allows to set a desired slippage, if needed

NFA

If "true", the EA will disable opening possible opposite trades (no hedge) and apply FIFO rule. If "false", the EA will trade without NFA limitations. Please notice, despite the fact of enabling this option, some brokers may show a FIFO error from time to time, but it is not dangerous for the logic of the EA.



WE RECOMMEND TO USE THE DEFAULT SETTINGS. YOUR LEVERAGE SHOULD BE HIGHER THAN 1:50 (BIGGER LEVERAGE IS BETTER FOR RELIABILITY). IT IS NECESSARY FOR A STRATEGY OF THE EA TO WORK ONLINE 24/7.

DO NOT TRY TO USE CRACKED VERSION OF FOREXIMBA IN ORDER TO AVOID UNPREDICTABLE RESULTS.

Ask your questions here: support@foreximba.com